

cultural intelligence

Extracts from Workshop Facilitated by Graham Bidois Cameron (Ngāti Ranginui, Ngāti Hinerangi, Ngāti Rangiwēwehi)

for the Michael and Suzanne Borrin Foundation Grants and Scholarships Committee –January 2018

Contact: ggbcameron@gmail.com

Culture filters the way you see the world



This includes how we judge what a “good” concept/service/prog. is...

Govt. & philanthropic funders

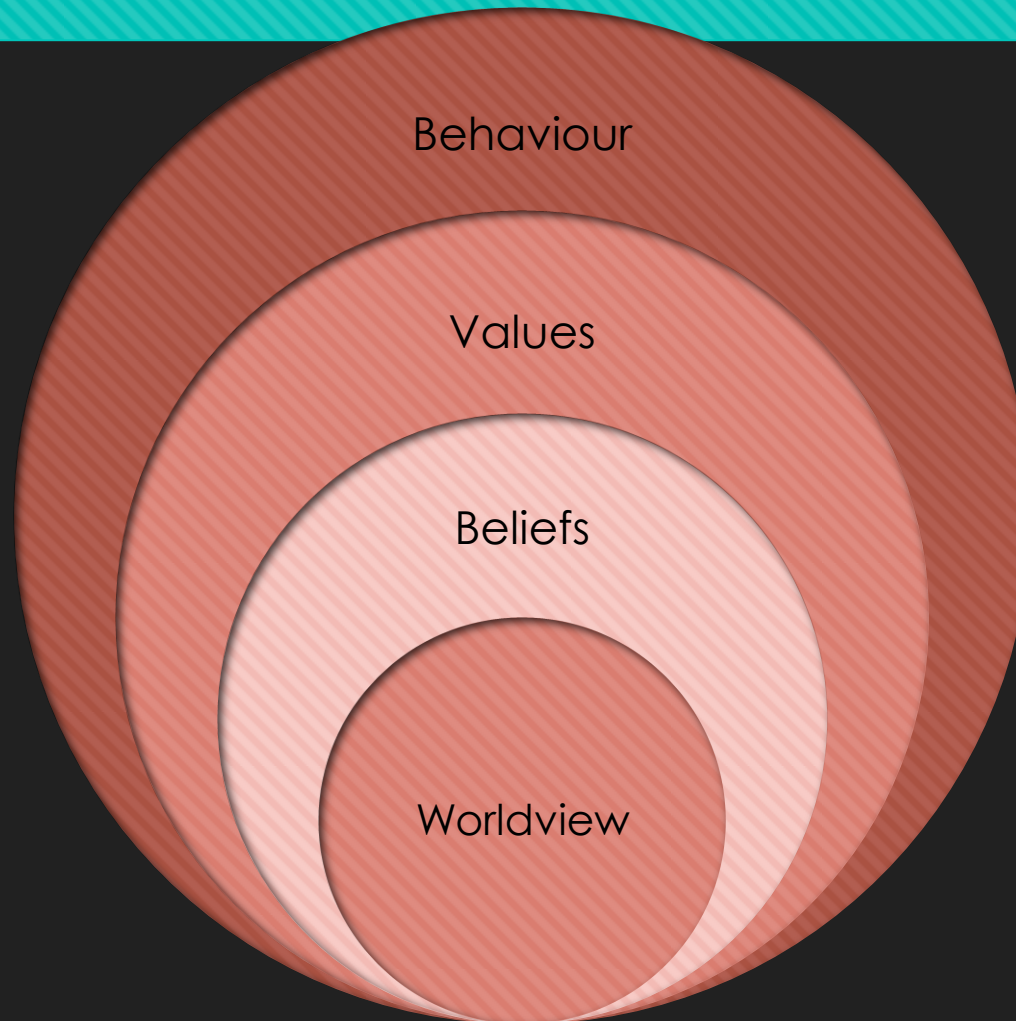
- Efficiency & timeliness
- Accurate, quantitative data (measures)
- Clear lines of accountability & boundaries
- Objectivity in evaluating & assessing outputs

Māori & iwi providers

- Whakawhanaungatanga – positive familial relationships
- Wairua – how people feel about the service/programme
- Maturanga – contribution to the collective knowledge
- Whakapapa – ancestral responsibilities & legacy

We are a people of culture

Lloyd Kwast



Potential Cultural Confusions

Soong Chan Rah, "Many Colours"

Individual orientation vs Group orientation

Equality vs Hierarchy

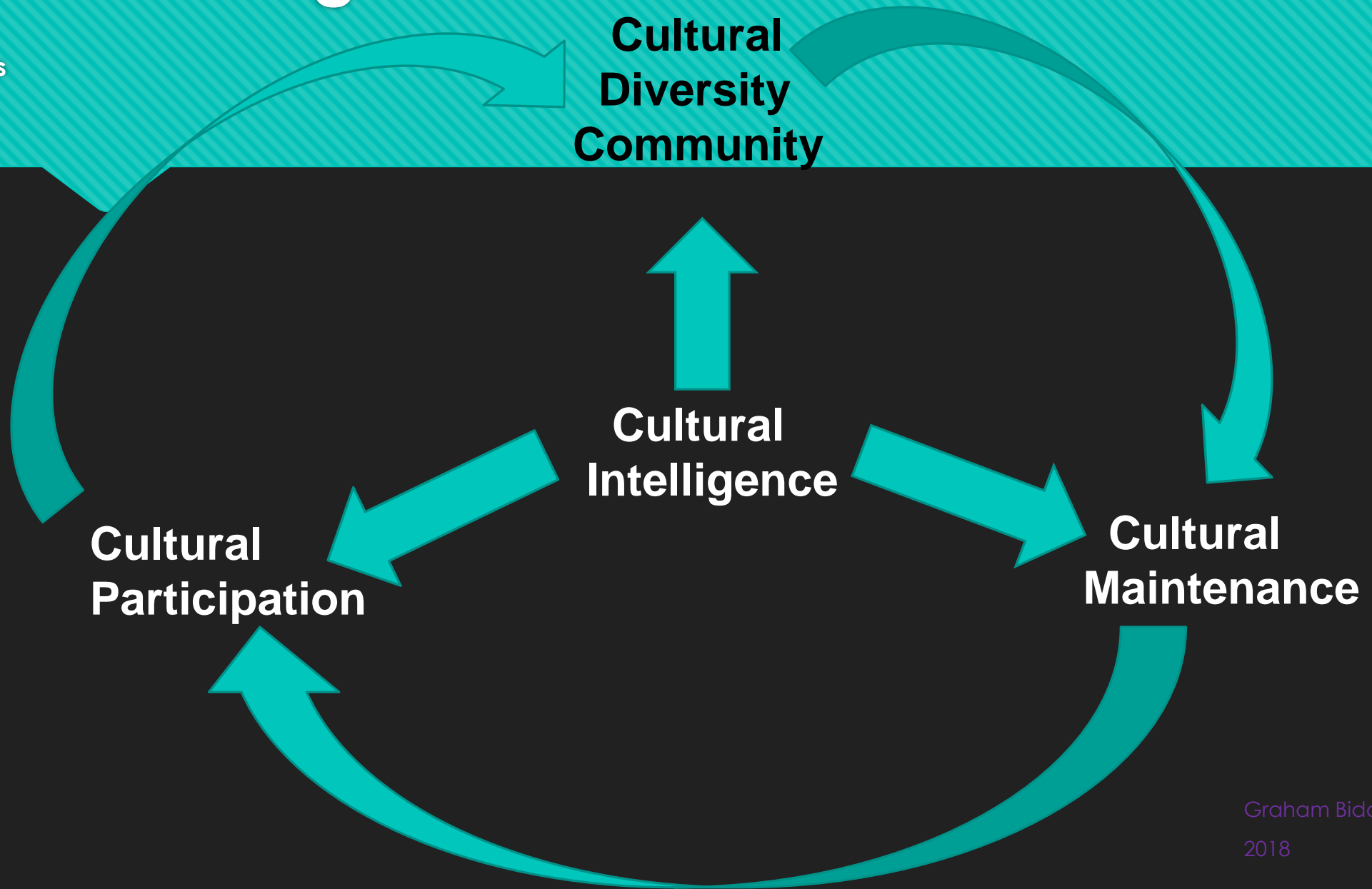
Task vs Relationship

Direct vs Indirect

Guilt vs Shame

Cultural Intelligence

Gregg Morris



Cultural Intelligence

“...understanding of one's own culture & the respectful assertion of one's culture into the larger dialogue so that who you are is engaged in that dialogue & therefore treads lightly, adding richness to that dialogue.”

Soong Chan-Rah

Cultural Intelligence is knowing how you see the world, accepting it is merely one way of seeing the world, learning what you can about how others see the world, being aware that in all your efforts you will never have their eyes to see, & humbly seeking out support to transcend your own ignorance and fears.